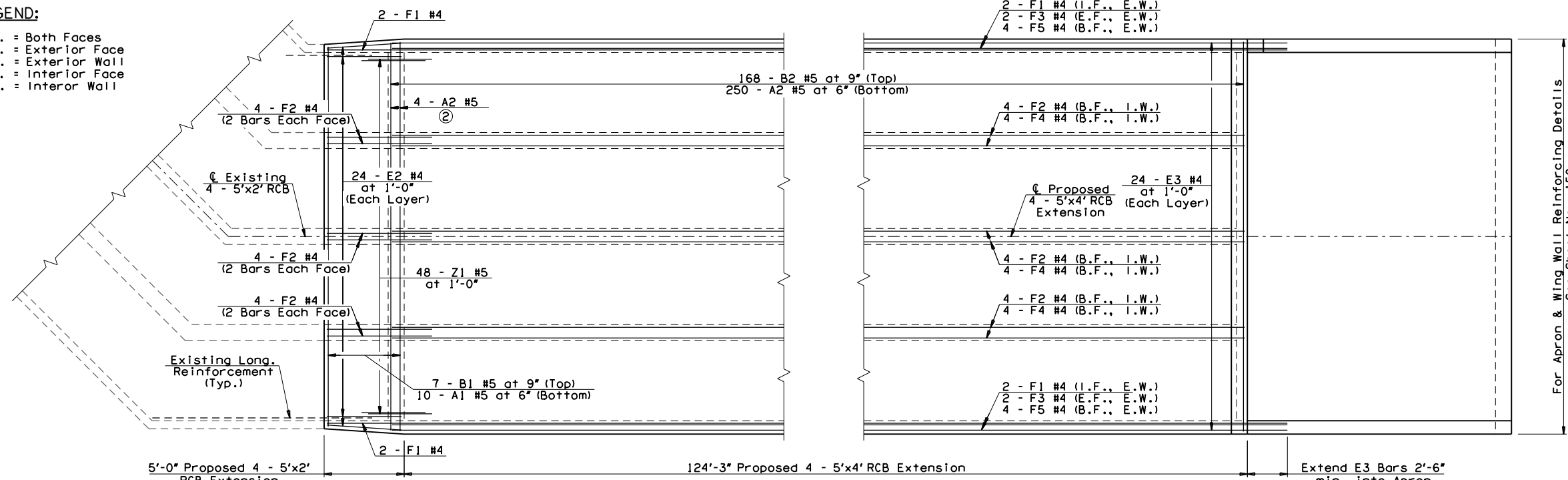


SLAB REINFORCING PLAN
(Showing Top Slab Reinforcement)

For Apron & Wing Wall Reinforcing Details See Sheet No. 150

BAR LIST - RCB BARREL						
MARK	SIZE	NO.	FORM	LENGTH	LENGTH VARIATION	
REINFORCING STEEL						
⑤	A1	#5	20	STR.	24'-0" AVG.	23'-8" TO 24'-4"
	A2	#5	501	STR.	24'-4"	-
⑥	B1	#5	14	STR.	24'-0" AVG.	23'-8" TO 24'-4"
	B2	#5	333	STR.	24'-4"	-
	C1	#5	350	BENT	4'-0"	-
	C2	#5	14	BENT	4'-4"	-
	C3	#5	336	BENT	6'-4"	-
	D1	#4	700	BENT	3'-5"	-
	D2	#4	42	BENT	2'-8"	-
	D3	#4	1,344	STR.	2'-6"	-
	D4	#4	1,344	STR.	4'-6"	-
⑦	E1	#4	48	STR.	133'-11"	-
	E2	#4	48	STR.	4'-8"	-
⑦	E3	#4	48	STR.	132'-6"	-
⑦	F1	#4	4	STR.	136'-7"	-
⑦	F2	#4	12	STR.	134'-1"	-
⑦	F3	#4	4	STR.	131'-9"	-
	F4	#4	12	STR.	129'-10"	-
	F5	#4	8	STR.	132'-6"	-
	Z1	#5	48	BENT	6'-0"	-

LEGEND:
 B.F. = Both Faces
 E.F. = Exterior Face
 E.W. = Exterior Wall
 I.F. = Interior Face
 I.W. = Interior Wall

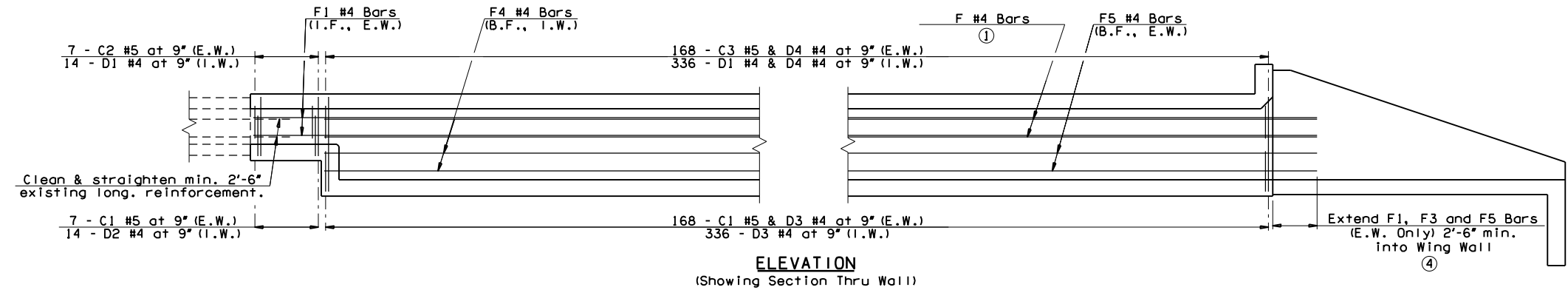


SLAB REINFORCING PLAN
(Showing Bottom Slab & Wall Reinforcement)

For Apron & Wing Wall Reinforcing Details See Sheet No. 150

SUMMARY OF QUANTITIES - RCB BARREL SECTION		
ITEM	UNIT	TOTAL
CLASS AA CONCRETE	C.Y.	296.60
REINFORCING STEEL	LB.	46,251.00

- ① 2 - F1 #4 (I.F., E.W.)
2 - F2 #4 (B.F., I.W.)
2 - F3 #4 (E.F., E.W.)
- ② See "SECTION C-C" on Sheet No. 148 for placement details.
- ③ Lap with Apron reinforcement.
- ④ Lap with Wing Wall reinforcement.
- ⑤ 2 sets of 10
- ⑥ 2 sets of 7
- ⑦ Includes two 2'-6" Lap Lengths. Laps shall be staggered.



ELEVATION
(Showing Section Thru Wall)

1-44 OVER CREEK BRIDGE "B"	COMANCHE COUNTY	DESIGN BSB 04/13
4 - 5'x4' REINFORCED CONCRETE BOX CULVERT DETAILS (SHEET 4 OF 5)		DETAIL BSB 04/13
		CHECK BRT 04/13
		GARVER
STATE OF OKLAHOMA	DEPARTMENT OF TRANSPORTATION	
JOB PIECE NO. 27050(04)	SHEET NO. 149	